

ENGLISH



exoplan

THE NEXT GENERATION

# IMPLANT PLANNING SOFTWARE



**exocad**



# LEAD THE FUTURE OF DENTISTRY



**HERO  
OF DIGITAL  
DENTISTRY**

Dr. Miguel Stanley, Dentist

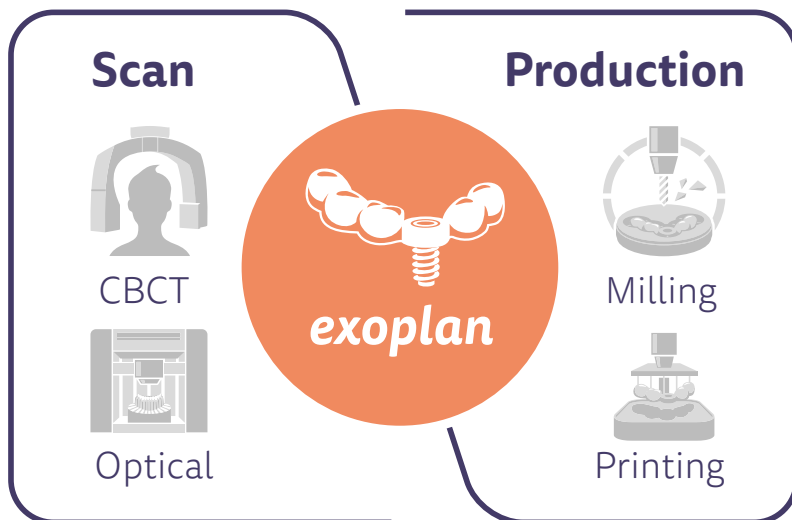
Innovative, intuitive, integrated

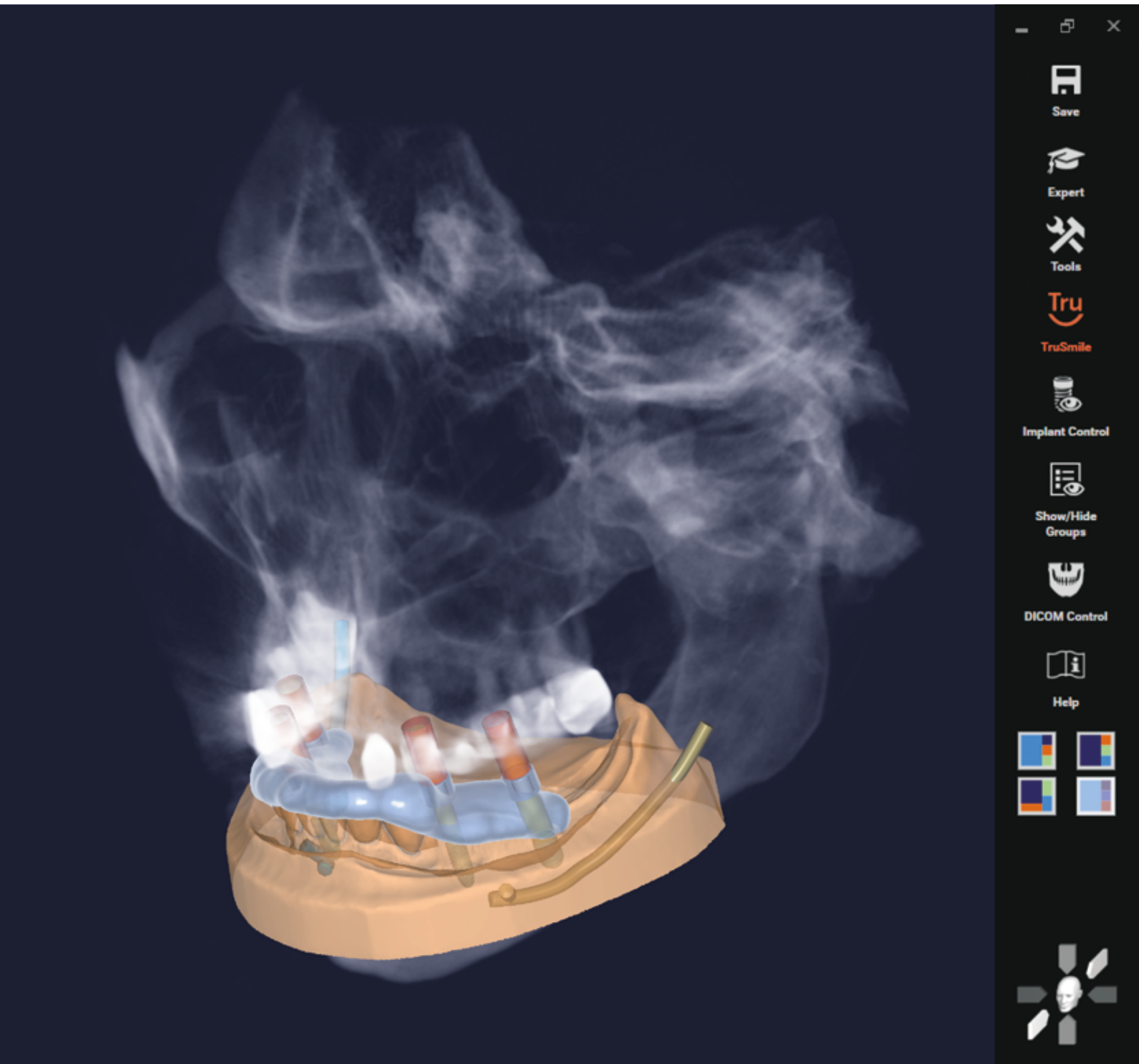
## Your **implant planning** with *exoplan*

**Discover our powerful implant planning and surgical guide design software *exoplan*—created to provide dental labs, dentists, implant specialists and surgeons with maximum flexibility. Based on the renowned *exocad* platform, *exoplan* guarantees a seamless digital workflow and the highest usability and performance.**

*exoplan* guides dental professionals through the planning of implants and the design of surgical guides in one intuitive, digital workflow. Thanks to the open, vendor-neutral software architecture, open 3D scanners, 3D printers or milling machines can be used. Our integrated software solutions guarantee the seamless functionality of the digital workflow—from virtual, prosthetic-oriented implant planning with *exoplan* to designing surgical guides with our *Guide Creator Module*. Edentulous patients can be treated particularly precisely and predictably with guided surgery. In addition, *exoplan* users can take advantage of seamless integration with *DentalCAD*, *exocad*'s dental CAD software, to facilitate their planning and production of implant-supported, temporary and final prostheses. With the immediate load feature, popular for provisionals, the original prosthesis scan is automatically loaded into *DentalCAD*.

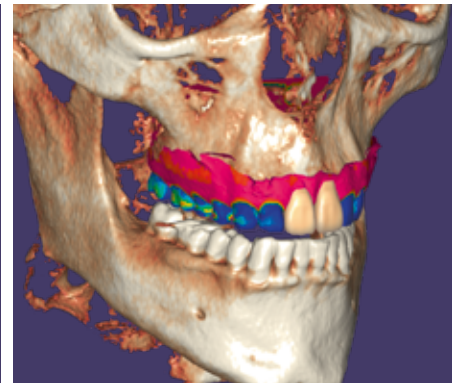
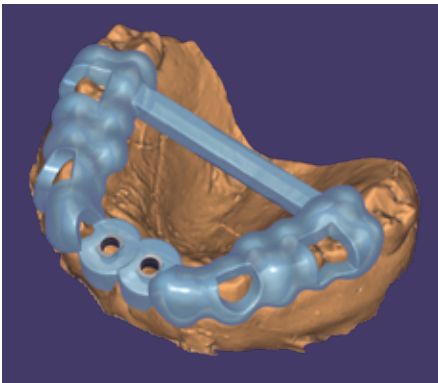
***exoplan*—our high-performance, user-friendly open software solution for your implant planning and surgical guide design.**





## Visualize, plan, create

Expand your service offerings with our innovative implant planning platform *exoplan* and its extensive features. With *exoplan*, the choice is yours! You can either plan and produce surgical guides in-house or outsource the planning, design or manufacturing. *exocad*'s proven wizard-based workflows guide you through each step of the process. Benefit from our broad library of implant systems and prosthetic components, which offer you and your customers greater flexibility and choice.



### In-house surgical guides—with *Guide Creator Module*

Design your own surgical guides and manufacture them in-house with your 3D printer or milling machine to maximize the return on hardware investments. Thanks to the standard data format STL, you have the freedom to choose your hardware and production center.

### Free choice—comprehensive implant and component library

The *exoplan* library comprises over 780 different implant libraries from top-tier manufacturers—such as Straumann, Nobel Biocare, Dentsply Sirona, Zimmer and Camlog—as well as numerous local suppliers. Users can also access *exocad*'s comprehensive library of over 55,000 compatible prosthetic components.

### Highest accuracy—alignment of scan data

Combine CBCT and surface scan data of a model by taking advantage of *exoplan*'s robust alignment tools. Additional refinement features maximize the accuracy of the aligned scans.

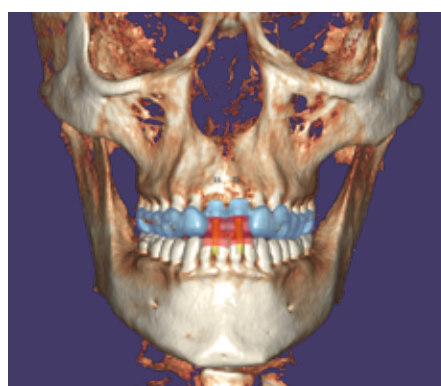
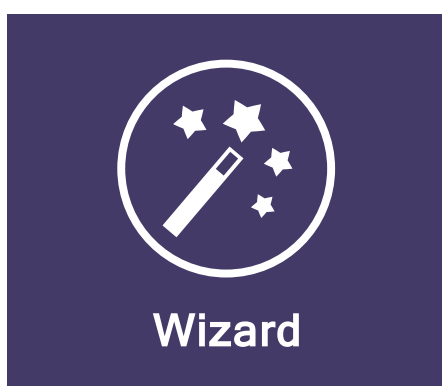
## Gain further insights on YouTube

Visit us on YouTube! On our channel, you will find stunning technology previews, useful video tutorials and informative quick guides which will help you to handle our products even better:

[videos.exocad.com](https://www.youtube.com/exocad)



For more videos, information or contact details, visit [exocad.com/exoplan](http://exocad.com/exoplan) or simply scan the QR code.



### High usability—wizard and expert modes

Thanks to *exoplan's* intuitive guided approach, implant planning with consistent results has never been easier. *exocad's* proven wizard-based workflow guides you through every step of the process. In *exoplan's* expert mode, you can access extensive supplementary features and tools.

### Ultra-fast—*exoplan's* DICOM Viewer Module

Get enthused with *exoplan's* high speed in processing large CBCT files. Due to optimized data-handling algorithms and snappy graphics rendering, *exoplan* provides market-leading DICOM loading and visualization speed.

### Secure—planning reports and surgical protocols

Facilitate your communication with surgeons through detailed reports and surgical protocols. Document every case and component configuration automatically.

**ONE  
PLATFORM**  
all digital dentistry  
solutions

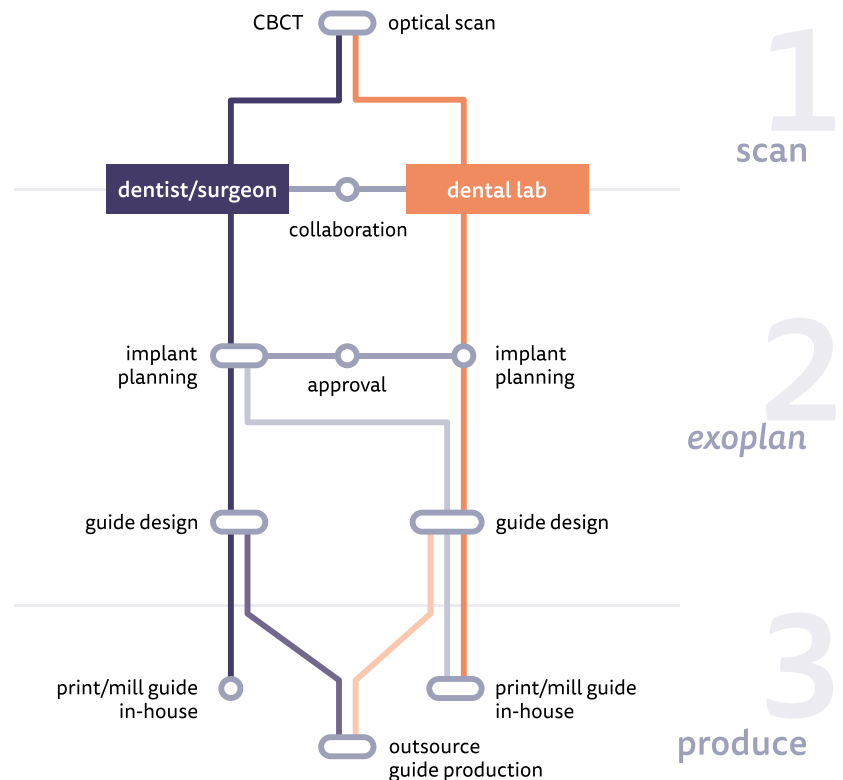
One of the most exciting advantages of *exoplan* is its platform—the worldwide renowned and leading *exocad* CAD software. It makes *exoplan* a very proven and stable software application with numerous user benefits. *exoplan* can easily and seamlessly be integrated with all *exocad* products and modules related to implant indications. Our software solutions offer you the perfect symbiosis of prosthetics and implant planning for reliable results that are cost and time efficient.

Exceptional flexibility with *exoplan*

## Control every step according to your requirements

Implantology is an integral part of modern patient treatment. It can involve many steps and parties from implant planning to surgical guide design and manufacturing. Enjoy freedom of choice and manage your individual process for guided surgery with *exoplan*!

Thanks to open yet integrated solutions for digital dentistry, you are in control of the desired workflows. While surgeons may only need our *exoplan* planning tools, dental practices and laboratories benefit from the complete solution, including our *Guide Creator Module*.



## No hidden costs

Maximize your profits with our simple and transparent pricing model. *exoplan* has no click fees and no hidden costs. With a low annual fee—which includes updates to future versions—you have access to our software for an unlimited number of cases. The modular software structure with our implant planning component and *Guide Creator Module* ensure that you only pay for what you really need. Thanks to its open and vendor-neutral software architecture, you can use *exoplan* with your existing equipment, such as any open 3D scanner, milling machine or 3D printer.

Diversity in every field

# Comprehensive selection of implant libraries

To allow for the optimum use of *exoplan*, exocad provides a market-leading range of over 930 verified and approved implant libraries, containing more than 16,000 validated implants, and more than 5,000 surgical components like drills, surgical sleeves, anchor pins and drill handles. The libraries are updated daily and can be downloaded free of charge for all customers via our web portal or in-software *Library Manager*.

Our flexible library concept allows us to support various platform-switching concepts, many surgery workflows based on the patients' bone densities, as well as the option to use compatible components from third-party providers within original manufacturer workflows. *exoplan's* market-leading support of implant manufacturer components allows for true freedom of choice for any preferred implant and surgical guide system. Find the latest overview at:

[exocad.com/exoplan-libraries](http://exocad.com/exoplan-libraries)

## A selection of *exoplan* library partners

 alpha-bio.net	 argon-dental.de	 biohorizons.com	 camlog.com	 conexao.com.br	 www.dentium.co.kr
 dentsplyimplants.de	 www.dioimplant.com	 implantdirect.com	 klockner.es	 medentika.de	 imegagen.com
 mis-implants.com	 neobiotecheu.com	 neodent.com.br	 nobelbiocare.com	 nt-trading.com	 osstem.de
 sinimplantsystem.com.br	 southernimplants.de	 straumann.com	 sweden-martina.com	 thommenmedical.de	 www.zimvie.com

Please note that some libraries detailed on this page may not be regulatory cleared, released or licensed for sale in all markets.

## Purchase exocad through one of our many partners

Rather than selling directly, exocad works with manufacturers, system integrators and dealers to provide integrated solutions, tailored for you. Our resellers provide their customers with extensive training and competent support. For comprehensive product support, offers or more information, contact one of our partners.

Find your partner at: [exocad.com/partners](http://exocad.com/partners)

At a glance

## Why **dental experts trust** our software solutions

**1** **Faster and more efficient**  
Our users save time with our robust, high-performance software that runs quickly, even when processing large and complex cases.

**2** **Complex cases simplified**  
The cases may be complex, but using our software is easy.

**3** **Flexible software, flexible business model**  
We offer maximum flexibility and freedom through our modular and open approach. Customers can mix and match modules, buy perpetual CAD software licenses or rent the software at attractive rates.

**4** **Reliable**  
We focus on the details when developing our software. That's why exocad products are known for their reliability.

**5** **Independent and innovative**  
Our open platform software puts our customers at the forefront of digital dentistry. Our engineers and researchers continuously push the boundaries of dentistry.

**6** **Truly future-proof**  
We're the dental CAD/CAM software provider with a wide choice of integrated solutions using third-party scanners, mills, printers and materials. We are always open to new ideas, ready to support today's and tomorrow's best innovations.

## Our solid foundation—dental CAD software from exocad

exocad was founded under the principle of being truly open and connected. As the leading OEM manufacturer for dental CAD software worldwide, our core competence is to establish interoperability standards. Manufacturers can thus integrate their databases, products, libraries and services. These integrations allow companies to focus on their core business while we continue to expand the depth of supported indications.

exocad and *exoplan*

# Your benefits at a glance

## For general dentists and implant specialists

### Improve your restorative results

*exoplan* supports prosthetic-driven planning.

### Work with your preferred implant system

*exoplan* offers extensive implant libraries.

### Opt for in-house or outsourced production

*exoplan* offers flexible workflows.

### Make the most of your devices

*exoplan* is compatible with open systems.

### Engage patients during the implant planning process

*exoplan* provides previews of the esthetic outcome.

### Collaborate effortlessly with partners

*exoplan*'s output can be directly imported into leading lab CAD/CAM systems.

### Simplify your documentation

*exoplan* generates automatic case reports.

### Benefit from a transparent pricing model

*exoplan* has no hidden costs or click fees.

### Produce your own surgical guides

*exoplan* supports open 3D printers or milling machines.

## For dental laboratories

### Expand your service offerings

*exoplan* enables implant planning and surgical guide designs for in-house production.

### Reduce rework and corrections

*exoplan* allows for prosthetic-driven planning.

### Create predictable restorations

*exoplan* accesses our comprehensive CAD component database of over 7,000 libraries with support for more than 55,000 prosthetic components.

### Work with your existing equipment

For surgical guide production, *exoplan* supports 3D printers and milling systems that can process open file formats.

### Improve collaboration

*exoplan* facilitates the communication with your clients for improved and predictable outcomes.

### Integrate workflows seamlessly

*exoplan* interoperates with exocad's *DentalCAD*.

### Benefit from a transparent pricing model

*exoplan* has no hidden costs or click fees.

### Apply your experience using exocad's *DentalCAD*

*exoplan* offers you a familiar user experience.

**Benefit from our proven software platform**—exocad software has been established in labs for more than 15 years.



exocad.com

Your exocad reseller

No reseller stamp here? Please visit [exocad.com/partners](https://www.exocad.com/partners)

Some products may not be regulatory cleared/released for sale in all markets.  
Please contact your local exocad reseller for current product assortment and availability.